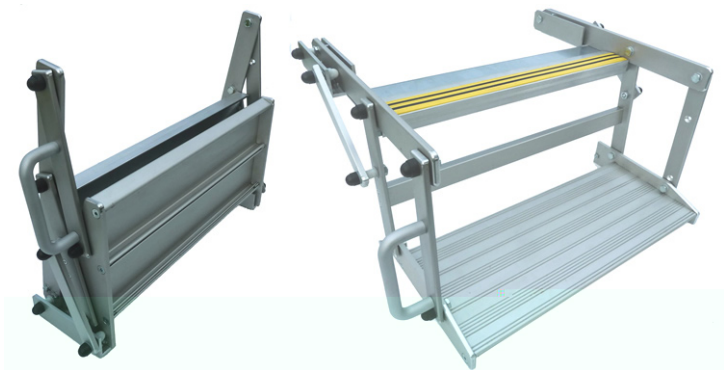


## SF600 FOLD-OUT DOUBLE STEP



### Step Operation

The SF600 manual step is deployed standing outside the vehicle and simply pulling on the grab handle to swing the step out through the doorway and lower it to its fully deployed position. It is stowed again from standing outside the vehicle and lifting the grab handle to fold it back through the doorway until it is fully folded and retained by the anti-rattle spring clips.

### Standard Equipment

- Extruded Anodised Aluminium ribbed tread profile
- Extruded Anodised Aluminium Side arms and links
- Nylon pivot bearings
- Rubber tiger strip to top tread
- Grab handle
- Floor mounting plates

### Dimensions

- Tread Width: 610mm
- Tread Height below floor mounting height: 240mm
- Minimum step well width to mount step: 735mm
- Minimum step well depth to mount step: 185mm

### Warranty

12 months on site with option at time of purchase to increase for a further year subject to approved service and maintenance.  
Complies with all current legislative requirements.  
CE marked.

The company has a policy of continual improvement and reserves the right to change the product specifications without notice

12.9 kgs