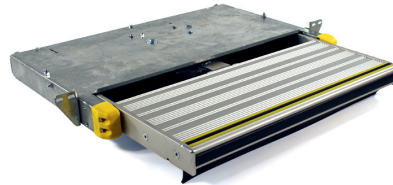
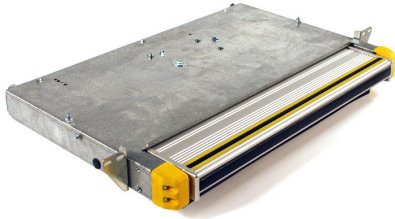




WM600 MANUAL CASSETTE STEP



Step Operation:

The WM600 manual cassette step is deployed by a damped gas spring which is activated by simply pushing the tread edge in a small distance with your foot and releasing. Once deployed, the tread is automatically locked in that position by a patented catch system which is activated by the weight of the person standing on the tread. The step is simply stowed by pushing the tread fully in by foot until the over-centre latch engages. There are no vulnerable release pedals required to operate the step.

Dimensions:

Tread size deployed	260mm x 610mm
Tread edge from sill lip deployed	315mm
Tread deployment movement	205mm
Minimum projection of case below sill height	68mm
Case depth behind sill lip	365mm*
Closed tread projection out from sill lip	110mm*
Overall width of case	688mm

*Can be varied – depending on mounting brackets used

Weight: 17kgs

Standard Equipment:

- Extruded Anodised Aluminium ribbed tread profile
- High grip Yellow and Black Rubber Strip to tread top edge
- Soft Rubber Cushion Strip to leading edge of tread
- Extruded Anodised Aluminium Side arms
- Rubber Weather Flap to underside of Tread
- High visibility corner mouldings
- Damped gas spring
- Galvanised Steel Case
- Stainless Steel Rails
- Nylon Rollers
- Over-centre latch mechanism
- Patented deployed lock-out mechanism
- Dash warning light
- Limit switch

Options:

- Corner Tread Flashing Lights
- Under Tread Lights
- Vehicle Mounting Kits for suitable vehicles

Warranty: 12 months on site

Complies with all current legislative requirements. CE marked.

The Company has a policy of continual improvement and reserves the right to change the product specifications without notice